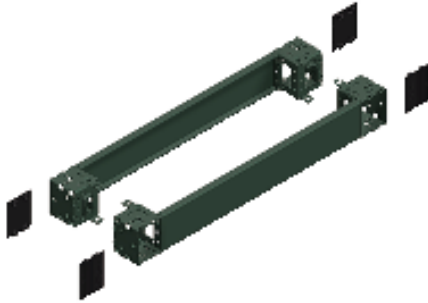


Product availability: Non-Stock - Not normally stocked in distribution facility

Price*: 117.17 USD



Overview

Lead time	Usually Ships within 4 Weeks
-----------	------------------------------

Main

Range	Spacial
Accessory / separate part category	Enclosure accessory
Product or component type	Plinth front
Device application	PC application Electronic application Multi-purpose Compartmentalised application
Enclosure nominal dimensions	-
Device composition	Fixing elements 4 corner cover 1 front panel 1 rear panel 4 corner
Range compatibility	Spacial SF Spacial SM Spacial SD Spacial S3D Spacial CRN
Mounting support	Plinth side panels

Complementary

Fixing mode	By fixing element - on structure
Color	Gray RAL 7022)
Surface finish	Epoxy-polyester powder
Permanent permissible load	2866.01 Lb(US) (1300 kg)
Height	3.94 In (100 mm)
Width	Nominal 23.62 in (600 mm)

Environment

IP degree of protection	IP30 complete plinth)
IK degree of protection	IK10

Ordering and shipping details

Category	80036 - ENCLOSURE SYSTEMS ACCESSORIES
Discount Schedule	ES1
GTIN	03606485126562
Nbr. of units in pkg.	1
Package weight(Lbs)	9.50 Lb(US) (4.309 kg)
Returnability	No
Country of origin	TN

Packing Units

Unit Type of Package 1	PCE
Package 1 Height	4.33 In (11 cm)
Package 1 width	7.87 In (20 cm)
Package 1 Length	24.21 In (61.5 cm)

Offer Sustainability

Sustainable offer status	Green Premium product
California proposition 65	WARNING: This product can expose you to chemicals including: Lead and lead compounds, which is known to the State of California to cause cancer and birth defects or other reproductive harm. For more information go to www.P65Warnings.ca.gov
REACH Regulation	REACH Declaration
REACH free of SVHC	Yes
EU RoHS Directive	Pro-active compliance (Product out of EU RoHS legal scope) EU RoHS Declaration
Mercury free	Yes
RoHS exemption information	Yes
China RoHS Regulation	China RoHS Declaration
Environmental Disclosure	Product Environmental Profile

Contractual warranty

Warranty	18 months
----------	-----------

Product Life Status : **Commercialised**